

Improved indoor climate with **SkamoWall**

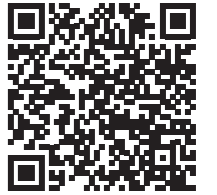


Learn more about SkamoWall

Table of contents

Improved indoor climate with SkamoWall	4
Regulate damp problems with SkamoWall	6
Eliminate mold with SkamoWall	8
All in one with SkamoWall	10
Simple mounting with SkamoWall	12
SkamoWall's expression	14
Preserve the architectural expression with SkamoWall .	16
Screw strength with SkamoWall	18
Production of SkamoWall	20
Technical information about SkamoWall Board	22





Read more about
indoor climate

Improved indoor climate with **SkamoWall**

SkamoWall consists of the calcium silicate board SkamoWall Board and associated products.

SkamoWall ensures an improved indoor climate by:

- ✓ Regulating damp problems
- ✓ Eliminating mold

Indoor climate in general

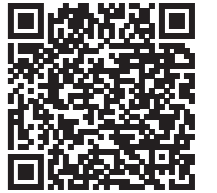
In addition to general dissatisfaction, an unhealthy indoor climate can result in chronic respiratory diseases, allergies and skin diseases.

In the EU, the average person spends 90% of their time indoors, and approx. 80. mio. live in a home with an unhealthy indoor climate.*

We will help solve that problem.

*VELUX's Sustainability Report from 2018.





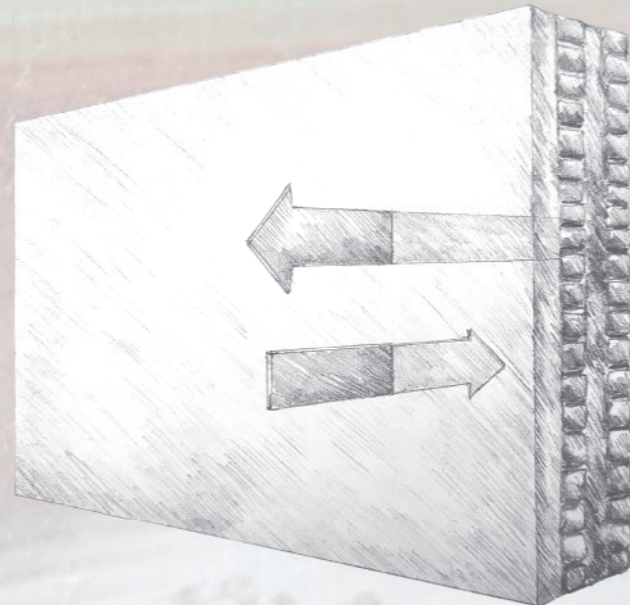
Read more about damp problems

Regulate damp problems with SkamoWall

Unlike traditional types of insulation, SkamoWall solves the damp problems in poorly insulated walls.

The main element in the SkamoWall system is the calcium silicate board SkamoWall Board, which absorbs damp in the room and thereby improves the indoor climate.

At a lower humidity, the SkamoWall Board will naturally release the damp into the room. This is a special material property and makes SkamoWall suitable for ensuring a better indoor climate.



The Research Institute writes:

Calcium silicate boards are the opposite of framework walls, in that they can absorb damp from the indoor climate, which can then diffuse through the material. When the damp content of the material becomes so high that capillary condensation occurs in the side toward the outer wall, the capillary absorbing properties of the material means that the damp is pulled against the indoor climate again, as the water will search for the dry part of the material. The water can now evaporate in towards the room until stability occurs and the surface becomes dry.

DBI instructions 240
Danish Building Research Institute

All in one with **SkamoWall**



Read more about
products



SkamoWall Board

Is a calcium silicate board available in standard sizes:
1,000 × 610 × 25/30/50/100mm
1,220 × 1,000 × 25/30/50/100mm



Skamol Primer

Is a primer that is applied to both sides of
the SkamoWall Board.



Skamol Lime Mortar

Is a combined adhesive and coarse-grained plaster on
which a diffusion-open paint can be applied.



Skamol Smooth Plaster

Is a fine-grained plaster on which a
diffusion-open paint can be applied.



In addition, there are a number
of products if there are special
requirements for the project.

At www.skamowall.com you will find a
calculator where you can calculate the
material consumption for your project.



Read more about mounting

Simple mounting with SkamoWall



The craftsman says:
Compared with other solutions on the market, we find that SkamoWall is significantly faster to put up, just as the preparation is significantly easier.

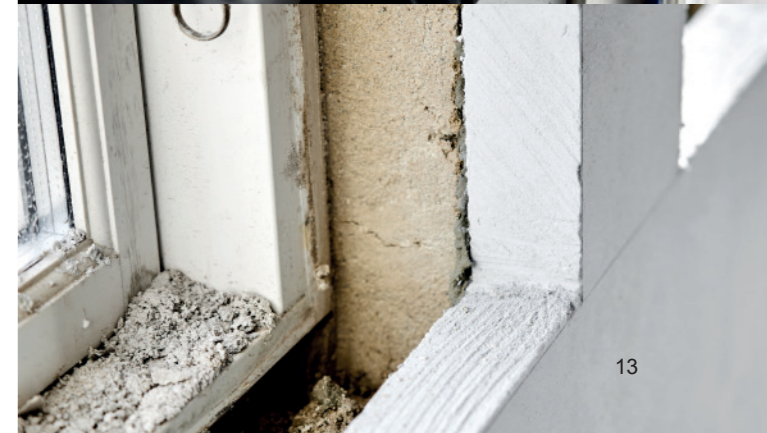
Master builder from Aarhus

The following pages provide a more detailed explanation of how to mount SkamoWall.

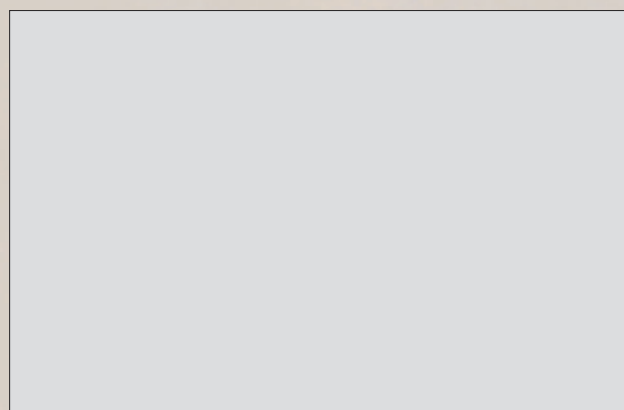
Mounting SkamoWall can be explained briefly in six points that make it easy for both DIY projects and professional craftsmen.

- 1 Prepare the wall**
Remove loose plaster, tar, paint residue and organic materials. In case of mould growth, clean the wall with a biocide product. Use the Skamol Lime Mortar adhesive so that unevenness does not exceed 10mm.
- 2 Prepare materials**
Use common tools to resize and prepare SkamoWall Board for installations (e.g. electrical and plumbing). Apply Skamol Primer to the inward-facing side of the board.
- 3 Mount the board**
Apply Skamol Lime Mortar to the SkamoWall Board and wall. Mount the boards on the wall and push the boards up against each other.
- 4 Apply the plaster**
Apply Skamol Primer to the outward-facing side of the board to be plastered. Choose between Skamol Lime Mortar and Skamol Smooth Plaster. Use the selected plaster to fill the joints.
- 5 Mount the optional protection products**
If necessary, you can mount Skamol Corner and Skamol Mesh for extra wall protection.
- 6 Finish the wall**
The wall can be painted, if desired.

Please note that any leftover material should be taken to your local recycling centre.



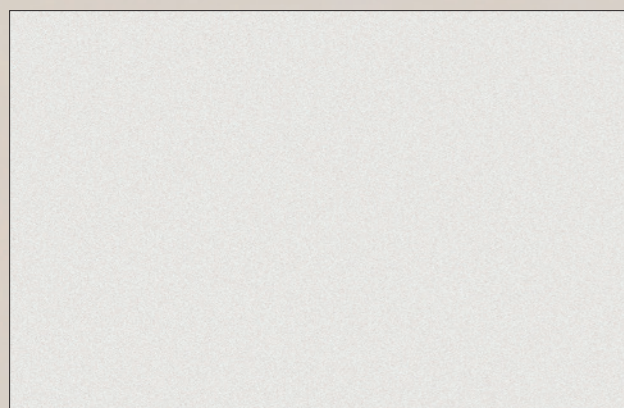
SkamoWall's expression



SkamoWall Board

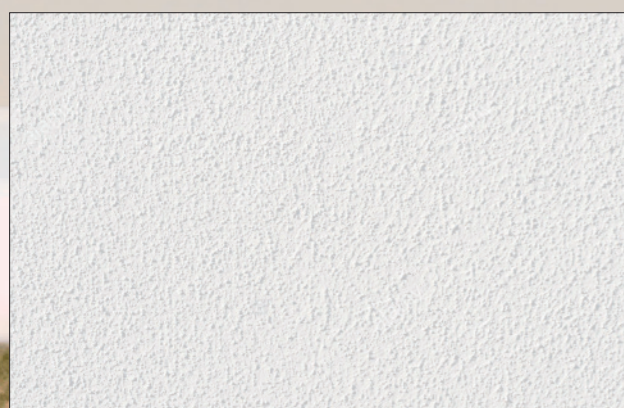
is a gray calcium silicate plate with a slightly dusty surface.

We recommend to apply either Skamol Smooth Plaster or Skamol Lime Mortar on SkamoWall Board to get the right visual expression.



Skamol Smooth Plaster

Skamol Smooth Plaster is a white fine-grained plaster that can be painted with a diffusion-open paint.



Skamol Lime Mortar

Skamol Lime Mortar is a white coarse-grained plaster with a grain size of 1-2mm that can be painted with a diffusion-open paint.

Paint

The primer and paint are applied to the selected plaster:

- Priming with DYRUP Silicate Primer V diluted 1:1 with water.
- Treatment 2 × DYRUP Indoor Silicate paint – Dilute any first layer with max. 10% DYRUP Silicate Primer V or water.





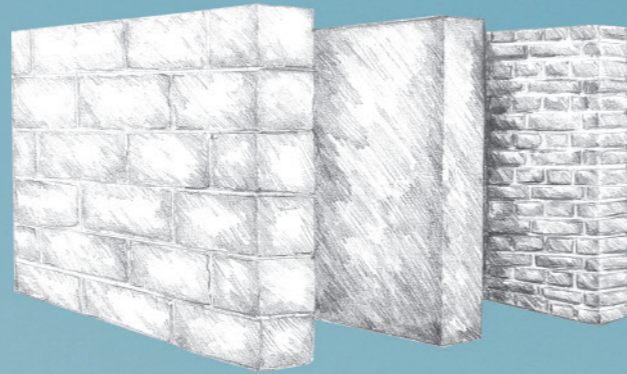
See references

Preserve the architectural expression with **SkamoWall**

Keep the original facade of the building and let SkamoWall solve problems with damp and mold.

SkamoWall can be mounted inside on walls of:

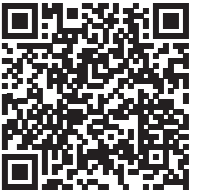
- ✓ Bricks
- ✓ Concrete
- ✓ Aerated concrete
- ✓ And all other inorganic wall types.



Renovation in general

Re-insulation is traditionally associated with time-consuming and expensive solutions. This is mainly due to the fact that the solution is often carried out as an exterior renovation of the facade. Among other things, this solution entails:

- High cost of scaffolding
- Stressful construction noise
- Time-consuming construction process



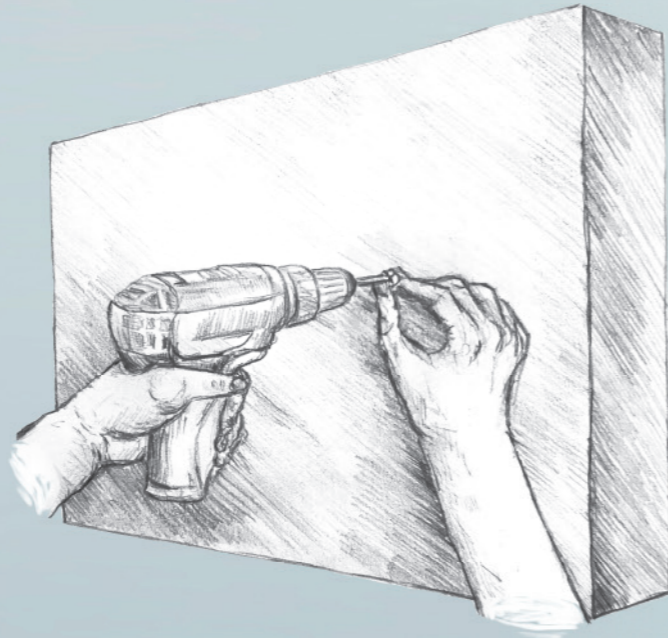
Read more about
screw holding capacity

Screw strength with SkamoWall

SkamoWall is light, has a high strength and is screw-tight. This means that you can screw directly into the board.

For loads over 2kg, we recommend using standard rawl plugs, which are easily mounted by pre-drilling in the SkamoWall Board.

- ✓ You can easily pre-drill and mount rawlplugs
- ✓ You can mill tracks for e.g. power cables into the boards



The project manager says:

We chose the SkamoWall indoor climate system with calcium silicate boards, as it basically eliminates damp, prevents mold, eliminates thermal bridges and significantly increases the surface temperature of the wall. At the same time, it has unique properties regarding screw-friendliness. Our requirement was that it should be possible to hang radiators directly onto the boards without having to screw into the wall behind the boards and thus increase the risk of thermal bridges. We tested, e.g. that the board was able to hold over 15kg per screw and a total of over 100kg on one shelf.

Project Manager from Boll+

Production of SkamoWall

International producer of calcium silicate

SkamoWall Board is made of the lightweight material calcium silicate, which is produced by the Danish company Skamol Group.

Skamol has more than 35 years of experience with production of calcium silicate, and today exports to large parts of the world.

What is calcium silicate?

The main constituents of calcium silicate are quicklime and microsilica, which is originally a by-product of silicon production.



Quicklime



Microsilica

Calcium silicate production units:

- Skamol Branden, Denmark
Started production in 1983
ISO EN 9001 certified
- Skamol Opole, Poland
Built in 2016
ISO EN 9001 certified



Find more
technical information

Technical information about SkamoWall Board

	Value	Unit
Bulk density (EN ISO 29470)	225	kg/m ³
	14	lb/ft ³
Compressive strength (EN ISO 29469)	2.6	MPa
	377	psi
Total porosity (EN 993-1)	91	%
Water vapour transmission, μ (EN 12086)	3	
Short term water absorption (EN ISO 29767)	28	kg/m ²
	5.73	lb/ft ²
Thermal conductivity (EN 12667), $\lambda_{23,50}$	0.068	W/(m×K)
	0.039	BTU/(h×ft×°F)

Sound reduction index ($R_w(C;C_w)$)	Thickness		
	25mm	25 (-2;-4)	dB
60mm	27 (-1;-3)	dB	

Thermal resistance	Thickness	R	
	25mm	0.37	(m ² ×K)/W
50mm	0.74	(m ² ×K)/W	
100mm	1.47	(m ² ×K)/W	
0.98in	2.09	(ft ² ×h×°F)/BTU	
1.97in	4.18	(ft ² ×h×°F)/BTU	
3.94in	8.35	(ft ² ×h×°F)/BTU	

Fire classification (EN 13501-1:2007 + A1:2009)	A1*
HS Tariff number (Harmonized Commodity Description and Coding System)	6806.90.00
Colour	Grey

* SkamoWall Board's fire resistance is classified in the highest requirement level A1 according to the European fire classification system EN 13 501.

This means that the SkamoWall Board is classified as a non-flammable material.



All in **one**



Data are average results of tests conducted under standard procedures and are subject to variation. Data contained in this data sheet are supplied in good faith as a technical service and are subject to change without notice. Misprint and errors excepted. Revision number: 26.10.2023

All in  one



See more at www.skamowall.com